

CONGRESSIONAL DISTRICTS

Map A

Both Sandy and the mountain communities are in CD 3, same as they are now.

Map B

Both Sandy and the mountain communities are in CD 6, the new district.

SENATE DISTRICTS

Maps A & B

Both Sandy and the mountain communities are in SD 26, the same as now.

HOUSE DISTRICTS

Map A

House District 52: Hood River County, Wasco (city of The Dalles), the mountain communities, E Gresham, Corbett, and Mosier.

House District 39: Sandy is in HD 39 with Molalla, Estacada, Colton, Redland, Molino, and other rural conservative cities, a district with a broad majority of Republicans.

Map B

House District 51 includes both Sandy and the mountain communities but does not include Hood River County, which is in a new district 58 that goes south through the Warm Springs Reservation.

Map C

House District 52 includes the mountain communities, Hood River County, and part of Wasco County (city of The Dalles).

House District 18 includes Sandy, right on the border, Molalla and other rural cities with a Republican majority and includes the House Republican leader's residence.

Proposal to be considered as a change to map C: put Sandy into HD 52, include Hood River County as mapped, remove The Dalles.

SCHOOL DISTRICT MAP

Mapped on House District Map C, the green lines are the Oregon Trail School District. Clearly the school district is split between two House Districts, which is not supposed to occur under redistricting.

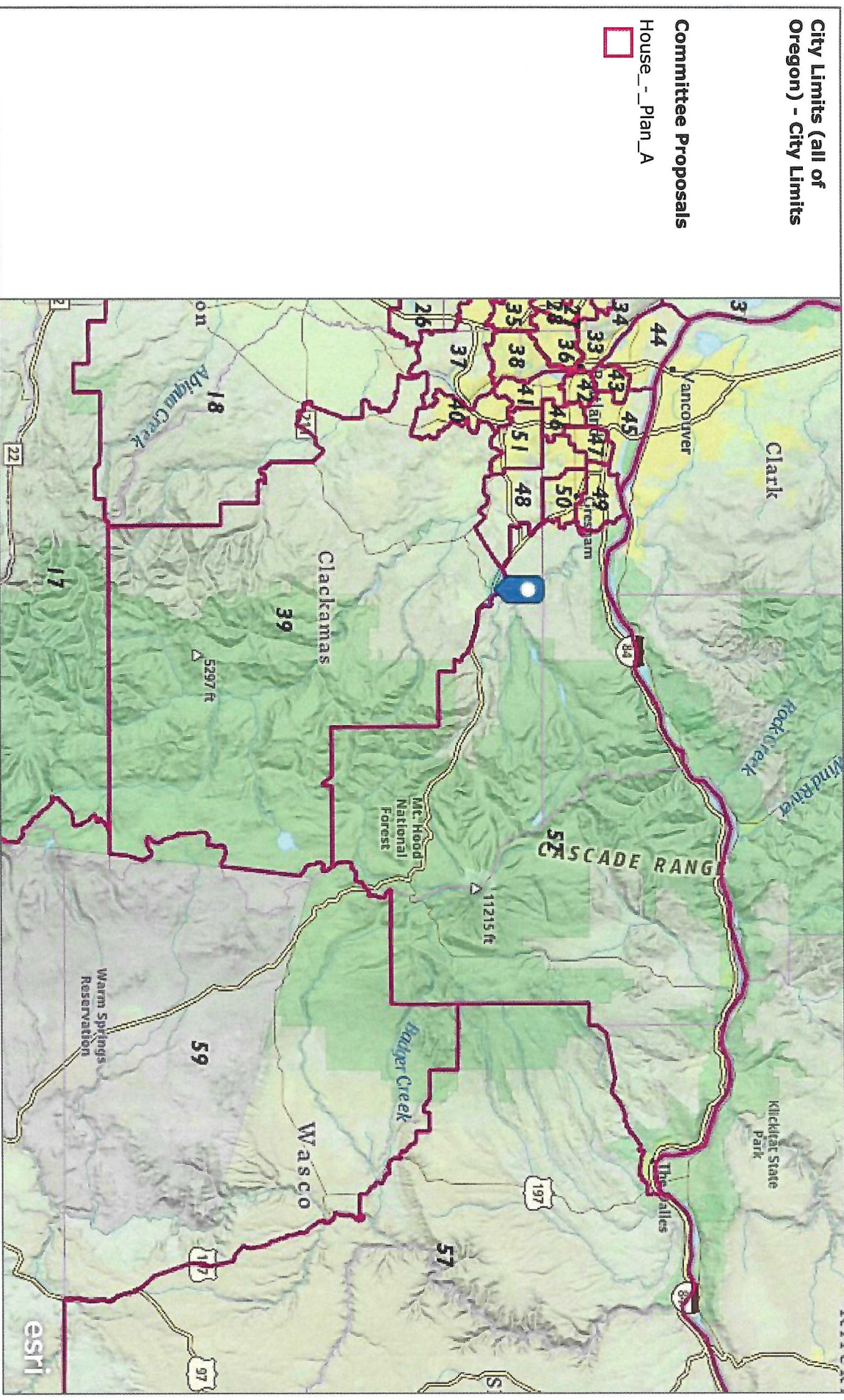
CITY OF SANDY

Political subdivision boundaries (cities, schools, etc.) should not be separated under redistricting. But note that not only are several parts of Sandy in HD 52 with the bulk in HD 18, but Cedar Ridge School and the new Middle School are in HD 52 and not in HD 18. Several subdivisions and other features are in HD 52 as well. The dotted line around the outside of those features is the city's boundary.

PROPOSAL FOR CONSIDERATION

Proposal to be considered as a change to map C: put Sandy into HD 52, include Hood River County as mapped, remove The Dalles.

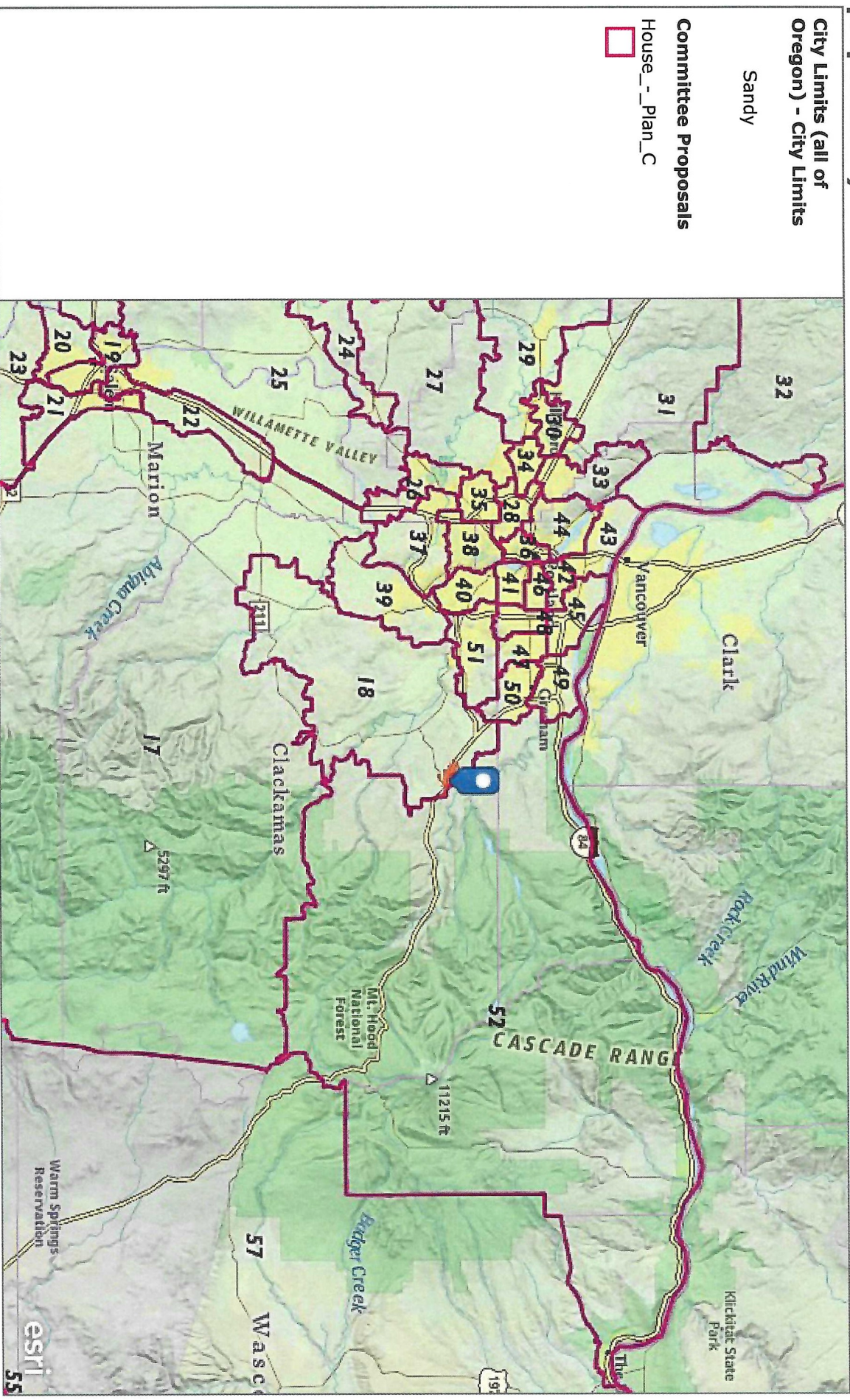
Redistricting Proposals and Submissions (**Click on Content, then a category name to see proposals. **)



Web map of committee proposals and the public's map submissions to the Oregon redistricting committees.

Oregon Dept. of Transportation | Esri, CGIAR, USGS | Sources: Esri, USGS | Oregon Metro, State of Oregon GEO, Esri, HERE, Garmin, SafeGraph, FAO, METI/NASA, USGS, Bureau of Land Management, EPA, NPS

Redistricting Proposals and Submissions (**Click on Content, then a category name to see proposals.**)



Web map of committee proposals and the public's map submissions to the Oregon redistricting committees.

Oregon Dept. of Transportation | Esri, CGIAR, USGS | Sources: Esri, USGS | Oregon Metro, State of Oregon GEO, Esri, HERE, Garmin, SafeGraph, FAO, METI/NASA, USGS, Bureau of Land Management, EPA, NPS

Redistricting Proposals and Submissions (**Click on Content, then a category name to see proposals.**)

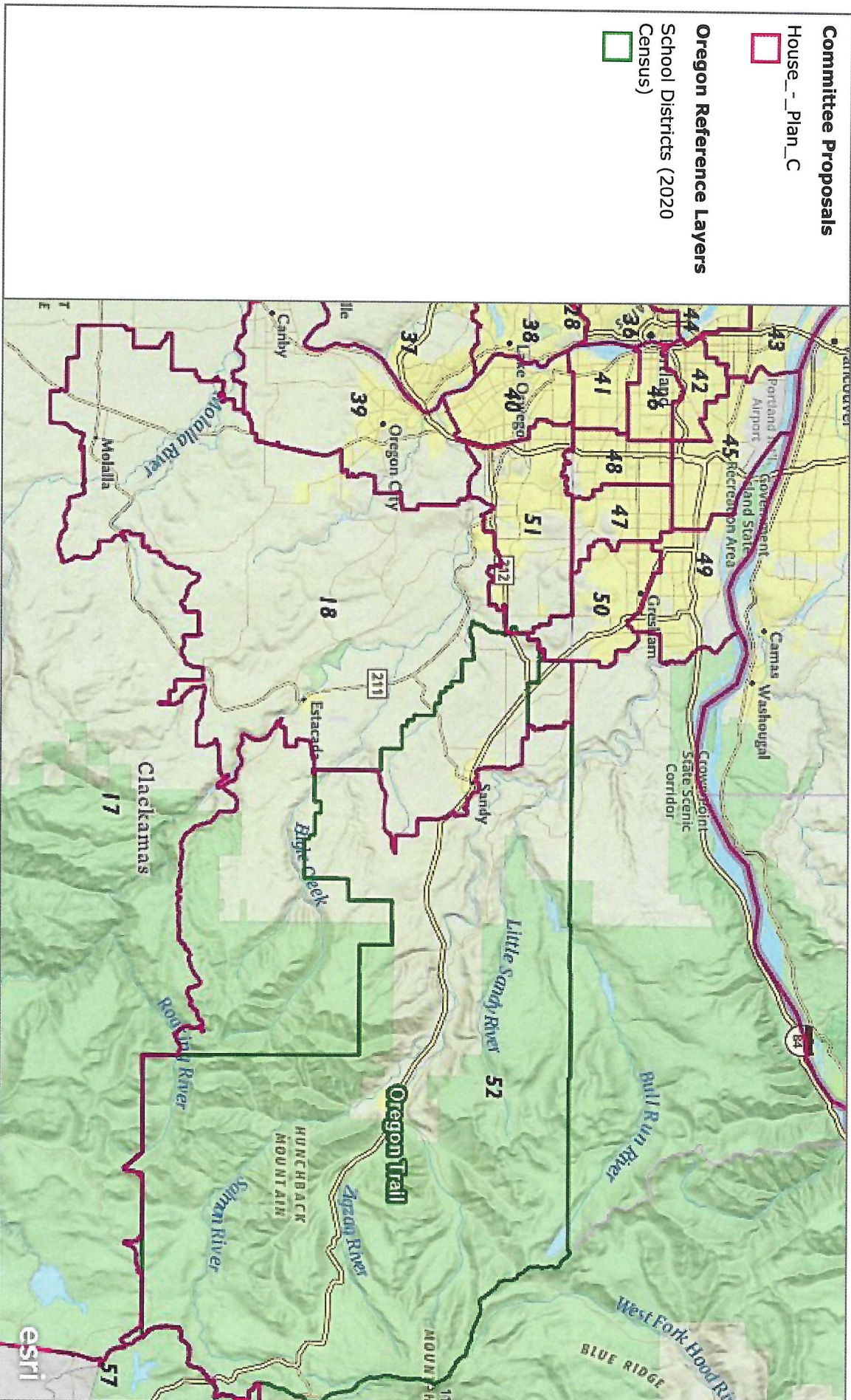
Committee Proposals

House_-_Plan_C



Oregon Reference Layers

School Districts (2020 Census)



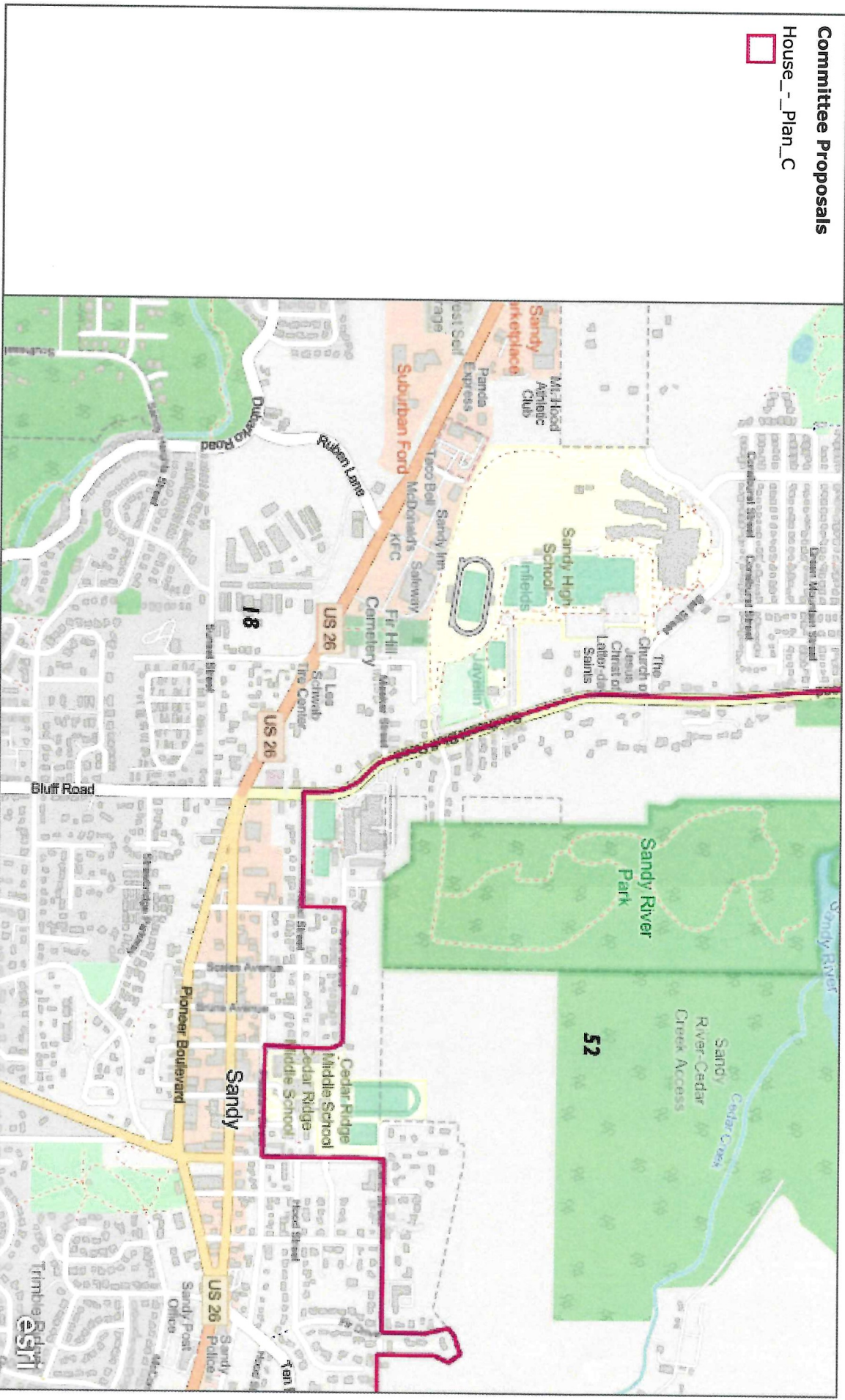
Web map of committee proposals and the public's map submissions to the Oregon redistricting committees.

Oregon Dept. of Transportation | Esri, CGIAR, USGS | Sources: Esri, USGS | Oregon Metro, State of Oregon GEO, Esri Canada, Esri, HERE, Garmin, SafeGraph, METI/NASA, USGS, Bureau of Land Management, EPA, NPS, USDA

Redistricting Proposals and Submissions (**Click on Content, then a category name to see proposals.**)

Committee Proposals

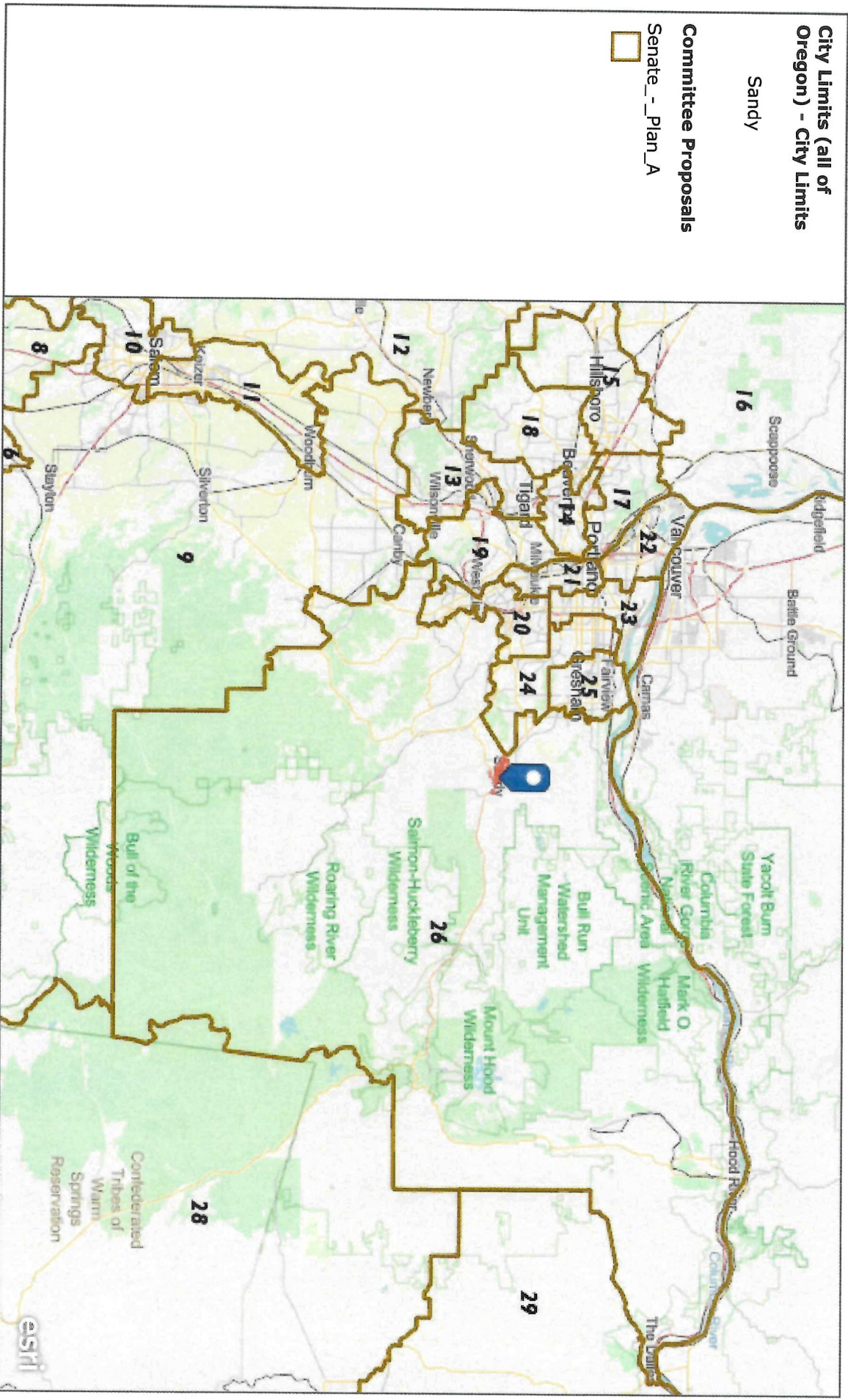
House_-_Plan_C



Web map of committee proposals and the public's map submissions to the Oregon redistricting committees.

Oregon Dept. of Transportation | Map data © OpenStreetMap contributors, Microsoft, Esri Community Maps contributors, Map layer by Esri

Redistricting Proposals and Submissions (**Click on Content, then a category name to see proposals.**)



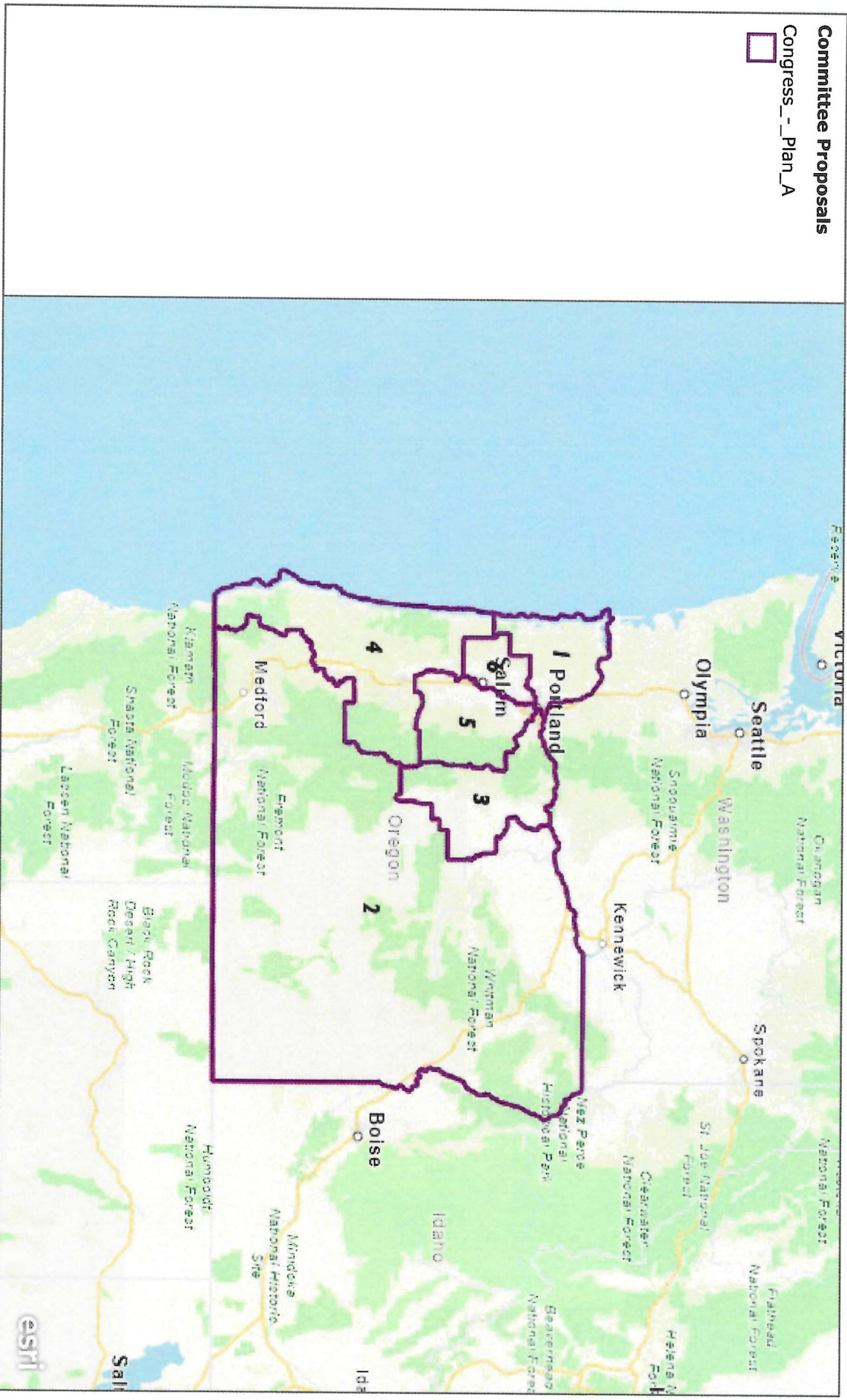
Web map of committee proposals and the public's map submissions to the Oregon redistricting committees.

Oregon Dept. of Transportation | Map data © OpenStreetMap contributors, Microsoft, Esri Community Maps contributors, Map layer by Esri

Redistricting Proposals and Submissions (**Click on Content, then a category name to see proposals.**)

Committee Proposals

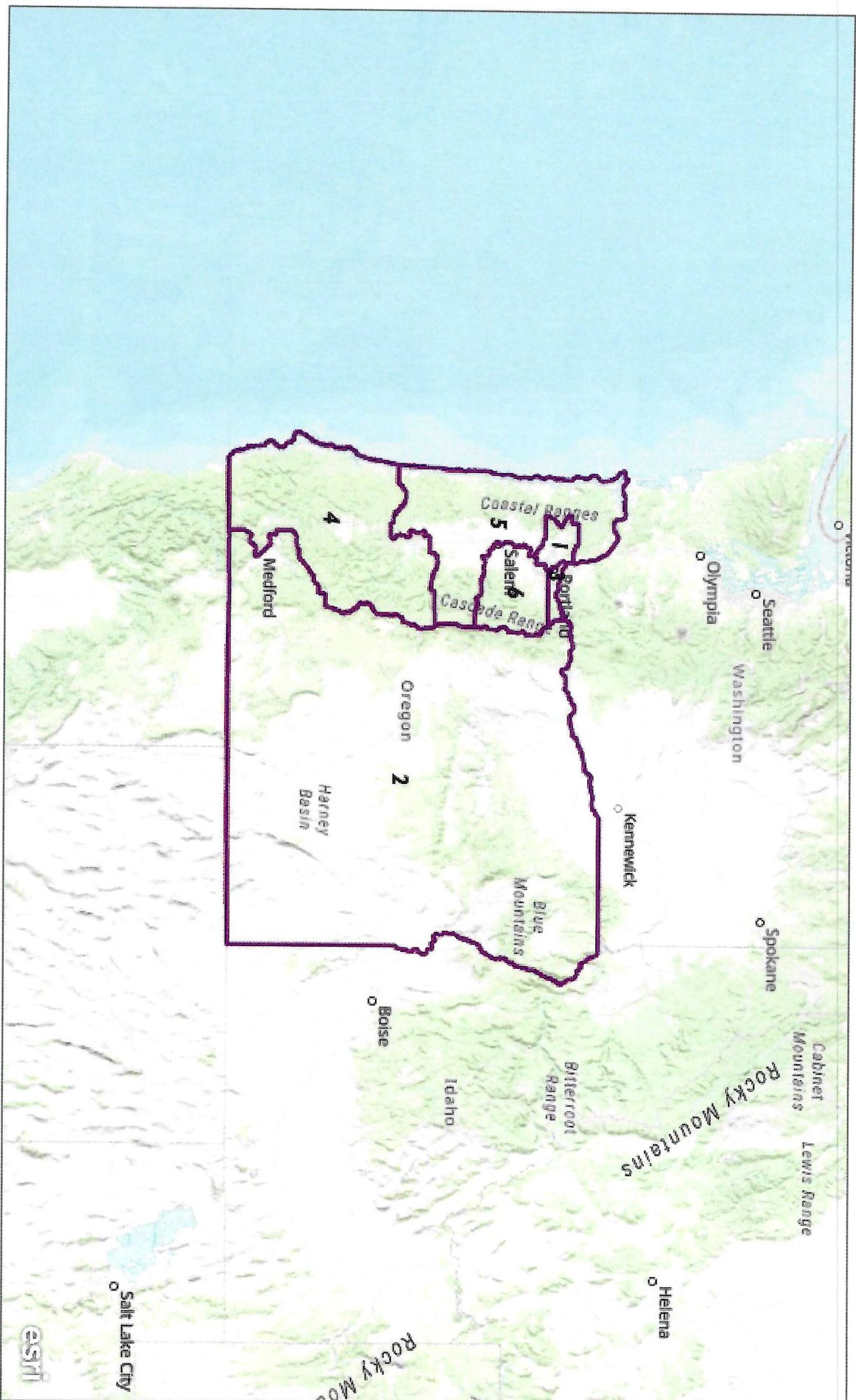
Congress_-_Plan_A



Web map of committee proposals and the public's map submissions to the Oregon redistricting committees.

County of Crook, State of Oregon GEO, Esri, HERE, Garmin, FAO, NOAA, USGS, Bureau of Land Management, EPA, NPS

Committee Proposals



District maps proposed by the committees or their members

Esri, USGS | County of Crook, State of Oregon GEO, Esri Canada, Esri, HERE, Garmin, FAO, NOAA, USGS, Bureau of Land Management, EPA, NPS

Testimony to redistricting committee:

My name is Jan Lee. I live in Sandy in what is now HD 52. In looking at House maps A and C, both cause significant disconnection in our area. The proposed C map does the following:

- 1) Map C **separates our Oregon Trail School District** into new HD 52 and new HD 18 with the majority of the as the attached Map C shows (green line around the school district).
As stated in the hearing on September 3, school districts are not to be divided.
- 2) Map C **divides the city of Sandy**, placing the majority of our city in new HD 18, but leaves part of the city limits in each district, not respecting city boundaries. Sandy, as the 4th fastest growing city in Oregon and will continue to expand its boundaries and its existing urban growth boundaries go beyond the current city boundary.
 - a) Our middle school and the Cedar Creek School are in new HD 52; the rest of our schools are in new HD 18.
 - b) Several of our suburb housing areas are in new HD 52, the rest in new 18.
 - c) Several of our city parks are in new HD 52 and other parks are in new HD 18
- 3) Beyond dividing our city and school district boundaries, **communities of interest are divided**.
The residents of the smaller mountain communities come to Sandy to shop, for medical services, to use the city's parks, gyms, social services, and other resources. Yet an arbitrary line has been drawn separating these two community areas, the city from the mountain communities.
- 4) The **transportation corridor connection**, Highway 26, is the connect for the two community areas but was not honored. The bus route includes a loop including Sandy, mountain communities, and Hood River and return.

SOLUTION

There is a simple fix for correcting the C map:

Place Sandy within HD 52 and remove the City of the Dalles from HD 52. The populations are similar in size.

This solution brings all our Sandy schools back into the same House district, unites the full school district into one House district, brings our city boundaries into one district and reunites our mountain communities served by our city. After all, Sandy is the "Gateway to the Mountain."

Oregon Redistricting Law

188.010 Criteria for apportionment of state into congressional and legislative districts. The Legislative Assembly or the Secretary of State, whichever is applicable,

shall consider the following criteria when apportioning the state into congressional and legislative districts:

- (1) Each district, as nearly as practicable, shall:
 - (a) Be contiguous;
 - (b) Be of equal population;
 - (c) Utilize existing geographic or political boundaries;
Map C does not respect city boundaries or school district (political) boundaries.
 - (d) Not divide communities of common interest; and
Map C divides the mountain community from Sandy and mountain communities are tied to the resources of Sandy: medical, parks and recreation, gyms, groceries stores, etc.
 - (e) Be connected by transportation links.
Highway 26 is the "Gateway to the Mountain" going through Sandy and up to the mountain communities. The bus loop route is Sandy, to mountain communities, to Hood River and return.
- (2) No district shall be drawn for the purpose of favoring any political party, incumbent legislator, or other person.
- (3) No district shall be drawn for the purpose of diluting the voting strength of any language or ethnic minority group.
- (4) Two state House of Representative districts shall be wholly included within a single state senatorial district. [1979 c.667 §1; 1981 c.864 §2]